



1



1



1



Description

Robert Luff & Co are delighted to present this charming lower ground floor apartment, ideally situated in the highly sought after area of central Worthing.

Perfectly positioned just moments from the town centre, seafront, transport links and a wide range of local amenities, this attractive property offers an excellent opportunity for first-time buyers, investors or those seeking a conveniently located home with character.

The accommodation comprises a good-sized double bedroom, a modern fitted bathroom, and a spacious open-plan lounge/kitchen area, providing a comfortable and welcoming living space. A particular feature of the property is its private garden, offering a rare and desirable outdoor area in such a central location.



Key Features

- Central Worthing Location
- Private Garden
- Neaby To Local Amenities
- EPC - C
- Lower Ground Floor Flat
- Charming Property
- Modern Bathroom
- Council Tax Band - A



robertluff.co.uk

30 Guildbourne Centre, Worthing, West Sussex, BN11 1LZ | 01903 331247 | info@robertluff.co.uk

Robert
Luff & Co

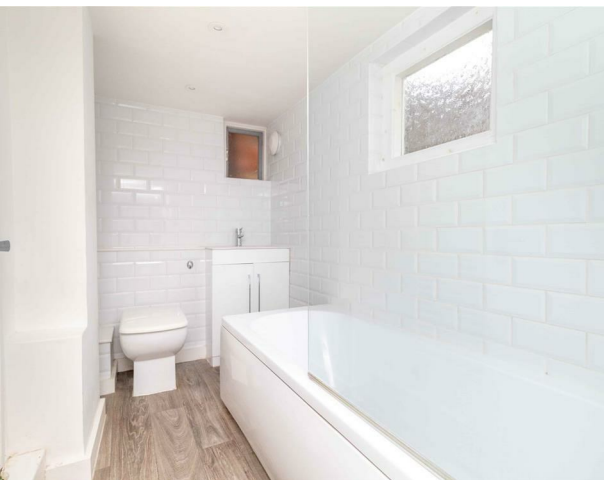


This delightful lower ground floor apartment offers well-proportioned accommodation throughout and combines character with modern convenience. The property features a spacious open-plan lounge/kitchen area, creating a bright and sociable living environment ideal for both relaxing and entertaining. The lounge provides ample space for a variety of furniture arrangements, whilst the kitchen is fitted with a range of units and work surfaces, offering practical storage and preparation space for everyday living.

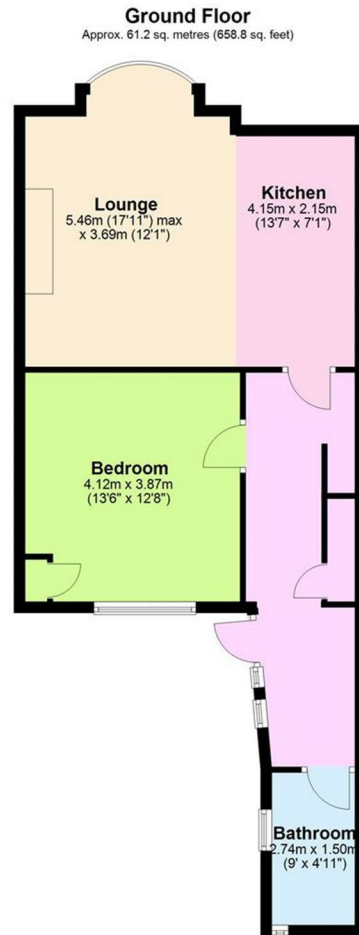
The double bedroom is generously sized, comfortably accommodating a range of bedroom furnishings. The modern bathroom is well appointed and finished to a contemporary standard, comprising a stylish suite that complements the overall presentation of the property. A particular highlight of

this home is the private garden, a rare and highly desirable feature for a property in such a central location. Offering outdoor space for relaxing, the garden provides an excellent extension to the living accommodation.

Situated in the heart of Worthing's vibrant town centre, Bedford Row is ideally placed for easy access to a comprehensive range of shopping facilities, cafés, restaurants and leisure amenities. The seafront and promenade are just a short stroll away, while Worthing's mainline railway station provides convenient links to Brighton, London and beyond, making the property an excellent choice for commuters and those seeking a coastal lifestyle. Combining a sought-after location, private outdoor space and well-presented accommodation, this charming apartment presents an outstanding opportunity for a wide range of purchasers.



Floor Plan Bedford Row



Total area: approx. 61.2 sq. metres (658.8 sq. feet)



Energy Efficiency Rating			Environmental Impact (CO ₂) Rating		
	Current	Potential		Current	Potential
Very energy efficient - lower running costs			Very environmentally friendly - lower CO ₂ emissions		
(92 plus) A			(82 plus) A		
(81-91) B			(61-81) B		
(69-80) C			(49-60) C		
(55-68) D			(39-48) D		
(39-54) E			(29-38) E		
(21-38) F			(11-28) F		
(1-20) G			(1-20) G		
Not energy efficient - higher running costs			Not environmentally friendly - higher CO ₂ emissions		
England & Wales	EU Directive 2002/91/EC		England & Wales	EU Directive 2002/91/EC	

The information provided about this property does not constitute or form any part of an offer or contract, nor may it be regarded as representations. All interested parties must verify accuracy and your solicitor must verify tenure/lease information, fixtures and fittings and, where the property has been extended/converted, planning/building regulation consents. All dimensions are approximate and quoted for guidance only as are floor plans which are not to scale and their accuracy cannot be confirmed. References to appliances and/or services does not imply that they are necessarily in working order or fit for the purpose.

robertluff.co.uk

30 Guildbourne Centre, Worthing, West Sussex, BN11 1LZ

01903 331247 | info@robertluff.co.uk

Robert
Luff & Co